

GUARDIAN Gorilla and Gorilla King Hinge

Installation and Maintenance Instructions

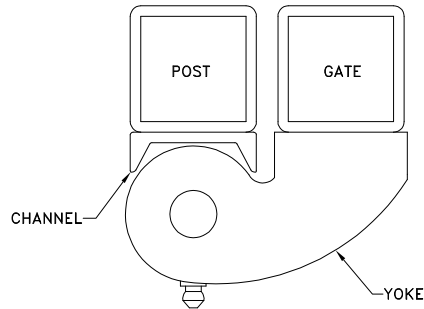


FIG. 1

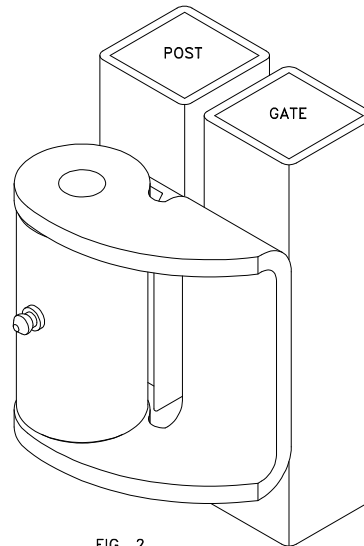


FIG. 2

INSTALLATION:

GUARDIAN gate hinges are to be mounted with the yoke (FIG. 1) welded to the gate and the channel welded to the post. The hinges must be installed with the hinge pins (pivot center) in a straight line.

Gorilla: Two hinges per gate leaf are recommended except in cases where the gate exceeds 6' in height or 6' in width or weighs more than 1000 pounds. In such cases additional hinges per leaf may be added at the installer's discretion. Weld only on the vertical portions of the yoke and plate. **DO NOT** weld the top and bottom of the hinges.

Gorilla King: Two hinges per gate leaf are recommended except in cases where the gate exceeds 6' in height or 6' in width or weighs more than 3000 pounds. In such cases additional hinges per leaf may be added at the installer's discretion. Weld only on the vertical portions of the yoke and plate. **DO NOT** weld the top and bottom of the hinges.

Bolt on versions of this hinge are available.

MAINTENANCE:

A regular maintenance schedule is important for the efficacy and durability of any gate system. This GUARDIAN gate hinge is equipped with a grease zerk for easy lubrication. One pump of a high quality, multi purpose grease every 3 months should be sufficient under normal operating conditions. More frequent maintenance is necessary under severe operating conditions.