



Guardian™ Surface Mount Electric (SMEH) Barrier - for Military and Industrial Security

Controls vehicle traffic - various system lengths

Electric function raises and lowers blades quickly (guard station use)

Easy installation Fasten to road and connect power

STRUCTURE

- Barrier available in sections - 36 inch (1 m) and 48 inch (1.3m) segments. **Systems lengths adjustable from 8' to 28'**
- Heavy-duty plate steel cover plate .250 (1/4)" standard **40 Ton Capacity**
- Durable polyurethane coating on cover plate (black color standard, others available)
- Tamper- resistant fasteners available
- All surfaces sandblasted, Epoxy Primer and Electrostatic Powder Coated

BARRIER BLADES

- Yellow blades (stainless steel blades available)
- Blade height 5'25"
- Sharpened steel blades .375 (3/8") thickness standard
- Center to center distance between blades - 3.69" for 36" and 3.75" for 48" segments

MECHANICAL

- Simple installation and low maintenance
- Design incorporates .750 shaft (inside barrier)
- Electric function raises and lowers blades (guard station, integration with gates and gate arms)

OTHER MODELS AVAILABLE

- LPS Spring loaded inground one way model uses torsion springs with long life and adjustable tension for heavy traffic locations and speeds up to 15 MPH
- LPE Low Profile Electric inground electric model stalls flush with road. 6-28ft length
- SMO model- electric Surface Mount with Over-ride function. Blades operate as spring loaded unless electric over-ride feature is used to lock the blades in the down position. LPO inground model also available with Over-ride feature

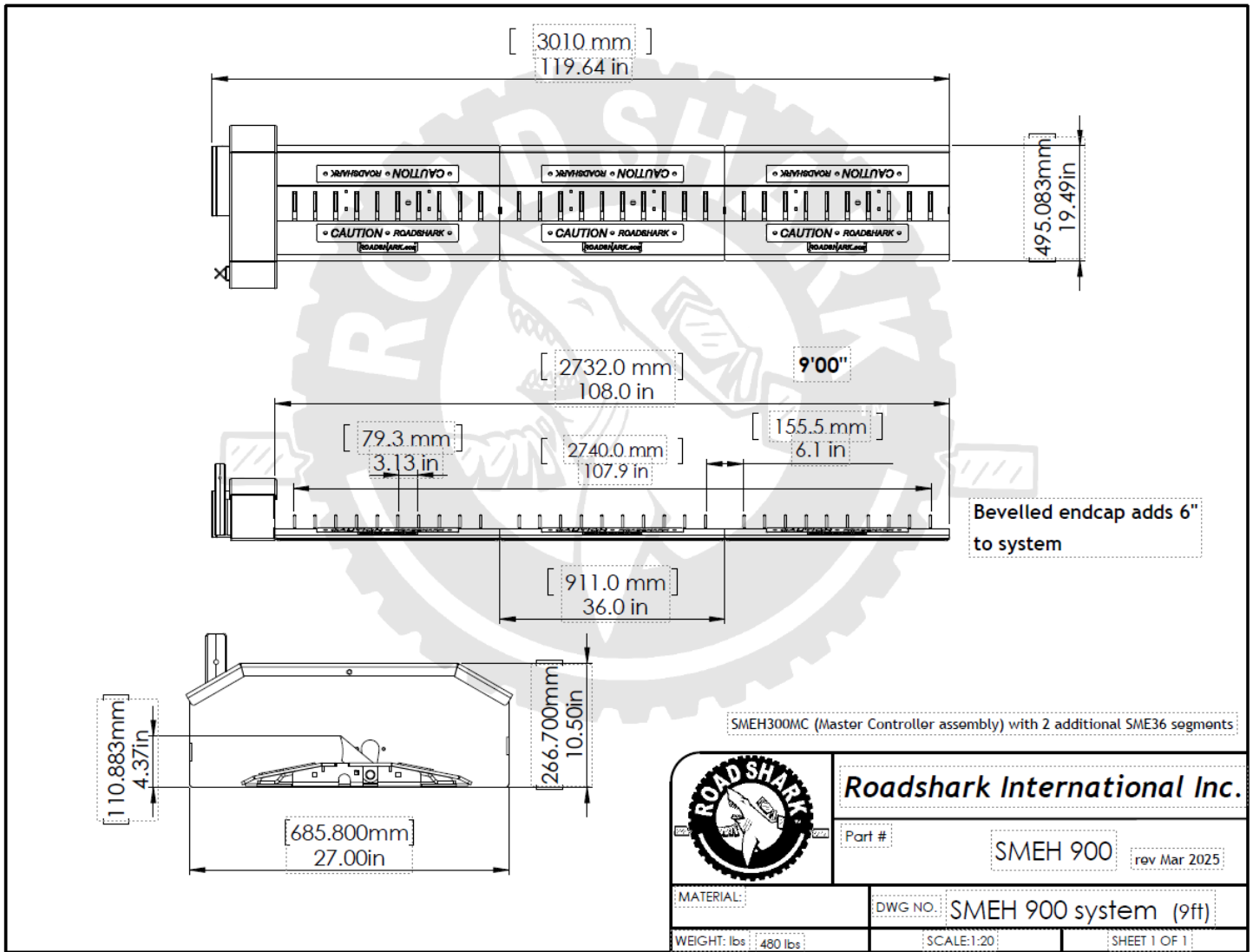
ACTIVATION Speed

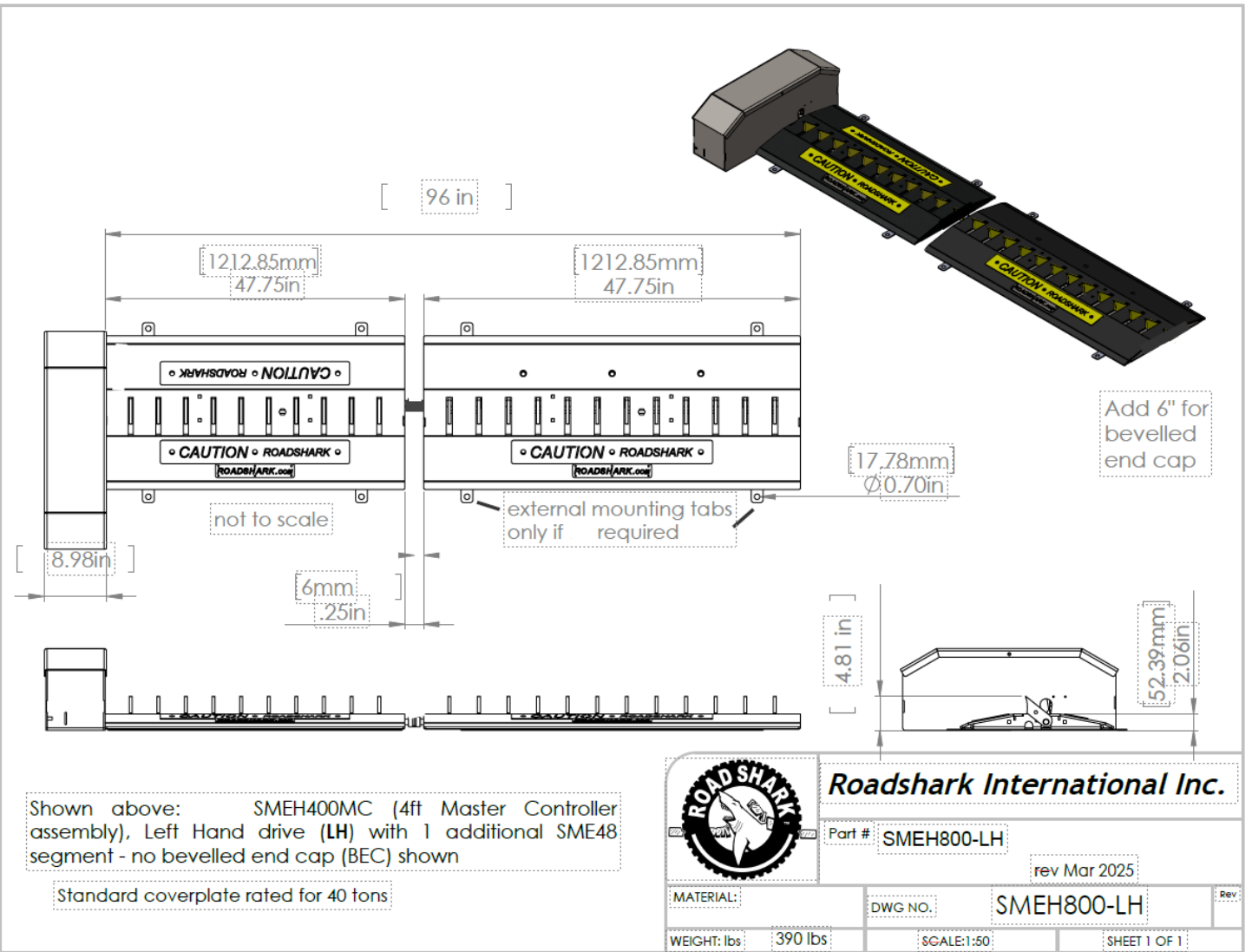
- SMEH and LPE models -blades raise is 1.5 seconds, 12VDC,24VDC and 115VAC motors available

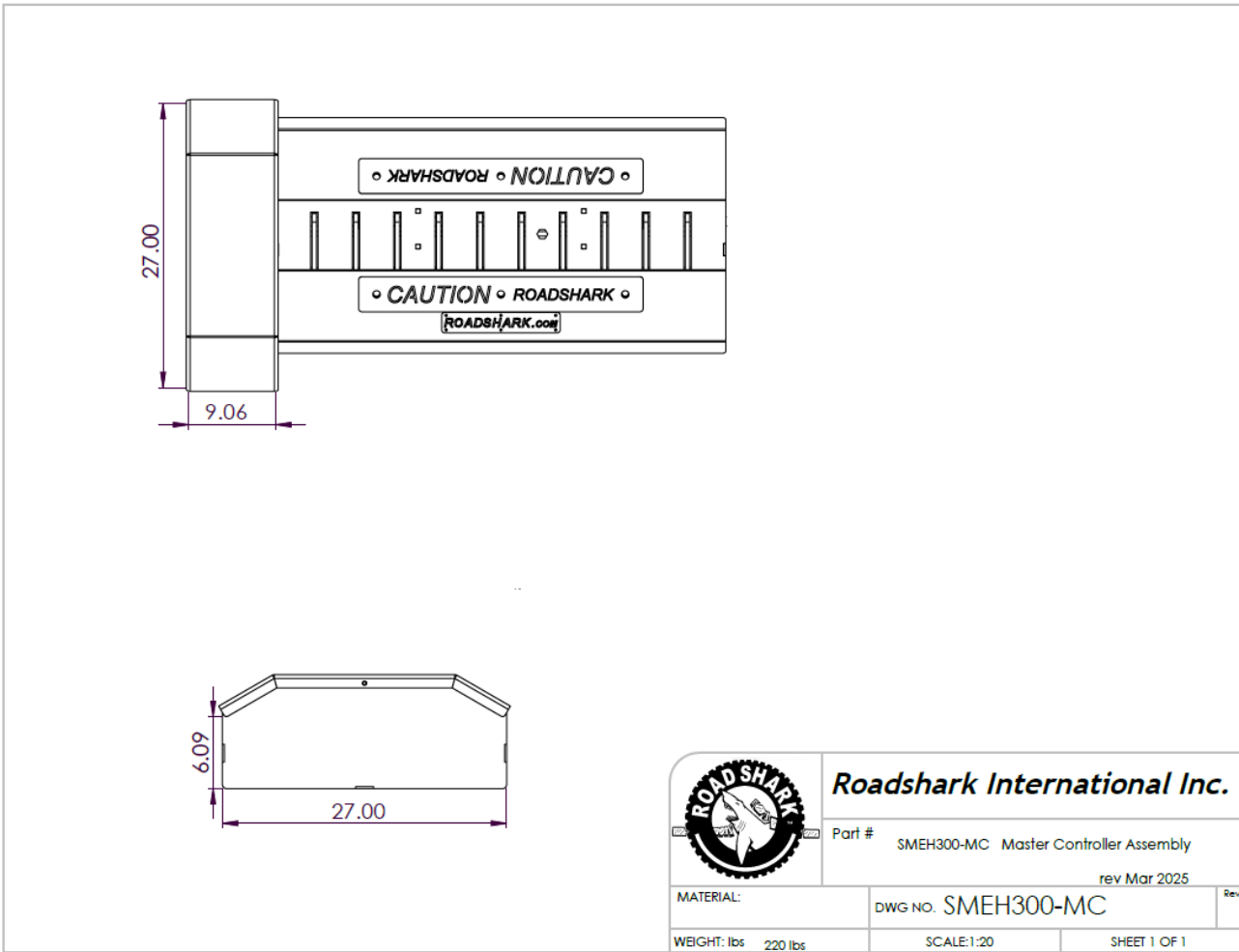
Activation options:

- Key Fob wireless remote control - KF
- Key Pad, programmable 10 digit keypad with 4 digit code -KP
- Integration with Gate arm or Gate controller. – 12 or 24V signal to Roadshark dry contact -Terminal block inside Nema Box
- Military Heavy Duty wireless remote control
- Hardwired to wall mounted switch or panic button.
- GSM – activation by cell phone call or text (SIM card provided by customer).

Request “ Roadshark Electric System Quote form”
 Electrical diagram available upon request







Master controller is available as SMEH300-MC (3ft of spikes) or SMEH400 (4ft of spikes)

Controller can be recessed into the curb as shown below:

