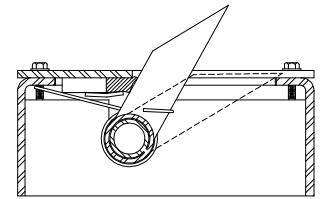
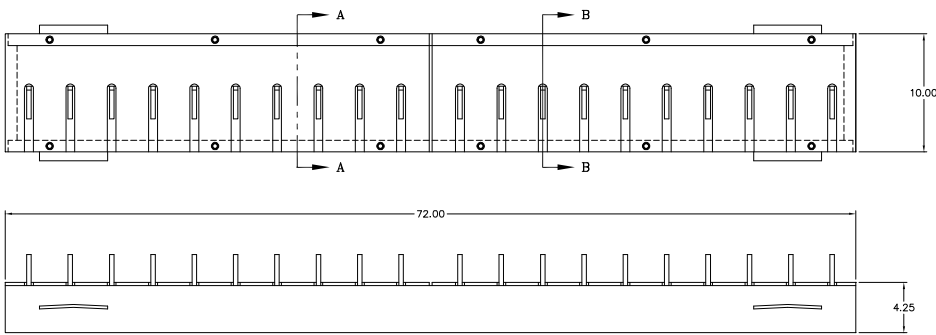
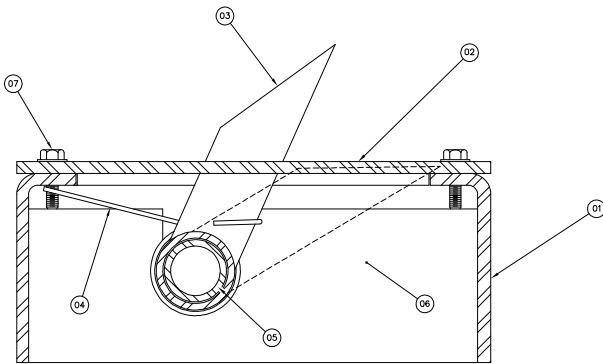


ITEM	REQ'D	DESCRIPTION/MATERIAL	REF NO
1	1	FRAME ASSEMBLY	2802
2	2	TOP PLATE	1029
2	2	TOP PLATE W/ BUMPER GUARD	2803
3	20	BLADE ASSEMBLY	1032
4	20	TORSION SPRING	1028
5	2	1" SCH 40 PIPE X 35.88 LONG	1033
6	2	SADDLE	2802
7	12	S16-18UNC X 1.00 LONG HEX HEAD	HHCS16181

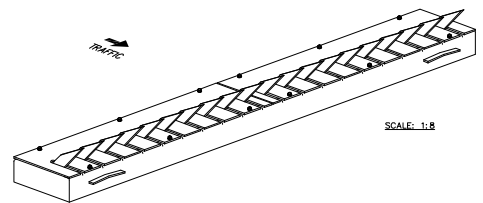
* OPTIONAL, SEE ORDER DATA



SECTION B-B
(OPTIONAL TOP PLATE W/ BUMPER GUARD)



SECTION A-A
SCALE: FULL



B	ECO 2009-005	L.G.	1/13/08	J. MANOR	1/13/09
A	CORRECTIONS	T.S.	3/8/08		
REV.	DESCRIPTION	DRAWN BY	DATE	APPROV BY	DATE

UNLESS OTHERWISE NOTED, DIMENSIONS ARE IN INCHES
 DIMENSIONS IN PARENTHESES ARE IN MILLIMETERS
 SURFACE FINISH: 100% UNFINISHED
 J = 0.000/PT
 K = 0.000/PT
 L = 0.000/PT
 M = 0.000/PT
 N = 0.000/PT
 O = 0.000/PT
 P = 0.000/PT
 Q = 0.000/PT
 R = 0.000/PT
 S = 0.000/PT
 T = 0.000/PT
 U = 0.000/PT
 V = 0.000/PT
 W = 0.000/PT
 X = 0.000/PT
 Y = 0.000/PT
 Z = 0.000/PT
 © 1994 AL. WOOD BROTHERS

TC14 ASSEMBLY	REV
2801	B
DATE	SCALE
8/13/03	1/4
DATE	SHEET
8/13/03	1 OF 1